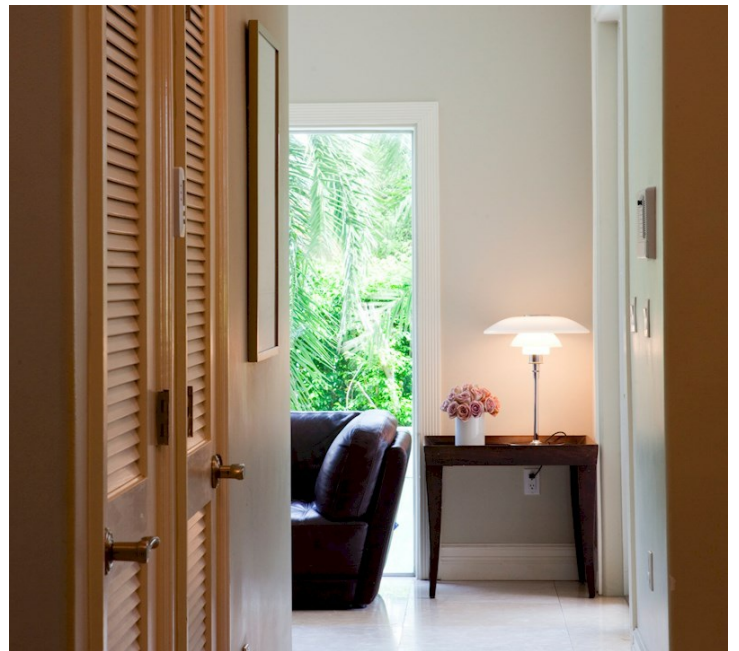


---

## PH 4½-3½ GLASS TABLE

---



**MIAMI PRIVATE**

**Design:**  
Poul Henningsen

**Concept:**  
The fixture is designed based on the principle of a reflective three-shade system, which directs the majority of the light downwards. The shades are made of mouth-blown opal three-layer glass, which is glossy on top and sandblasted matt on the underside, giving a soft and diffuse light distribution.

**Finish:**  
High lustre chrome plated. White opal glass.

**Material:**  
Shades: Mouth-blown white opal glass. Anti glare ring: Purple, spun aluminium. Top plate: High lustre chrome plated, spun brass. Base: High

**Weight:**  
Min: 9.9 kg Max: 10.0 kg

**Class:**  
Ingress protection IP20. Electric shock protection II w/o ground.

**Specification notes:**  
The innovation of light sources is ongoing. Consequently we only inform about the max. wattages. On [www.louispoulsen.com](http://www.louispoulsen.com) we update a list of recommendable light sources.

lustre chrome plated, spun brass. Stem: High  
lustre chrome plated, steel.

**Mounting:**

Cable type: Plastic cord with plug. Cable length:  
2.7m. Light control: Switch in lamp stand.

**Results (1)**



**LIGHT SOURCE**

**FINISH**

**ORDER-NO.**

1X150WE27

HIGH LUSTRE CHROME PLATED

5744161501



---

# SPAREPART

---

**PRODUCT NAME:****ORDERING NUMBER:**

PH 4½-3½ GLASS TABLE/FLOOR, MIDDLE SHADE

5744610612

PH 4½-3½ GLASS TABLE/FLOOR, LOWER SHADE

5744610625

PH 4½-3½ GLASS TABLE/FLOOR, TOPSHADE ACC

5744610722